



Fall 2011 SOAS

Summary of Answers and Skills Report

Eighth-Graders, Class of 2016

SAMPLE SCHOOL (00000)

ReadiStep results for your students are enclosed. Use this information to adjust curricula and instructional practice to improve student learning.

Find more information about interpreting ReadiStep results online at:

readistep.collegeboard.org

Performance Overview

This report details the performance of 258 students from the 8th grade. This page provides an overview of your students' performance on ReadiStep, allowing you to make general comparisons of your student population with the state and nation. The remainder of the report will assist you in analyzing your students' performance in much greater detail - use it to identify gaps in your local curriculum or to adapt instruction.

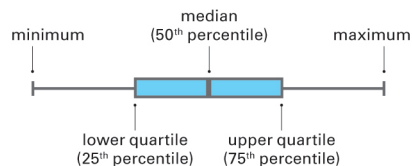
For each section of the test (critical reading, mathematics and writing skills), you will find the following:

- **Skill Analysis:** A summary of your students' performance on the college readiness skills tested on ReadiStep.
- **Question Analysis:** A detailed analysis of your students' responses to each ReadiStep question.
- **Comparable Group Analysis:** A statistical comparison highlighting anomalies in your students' performance on each ReadiStep question.

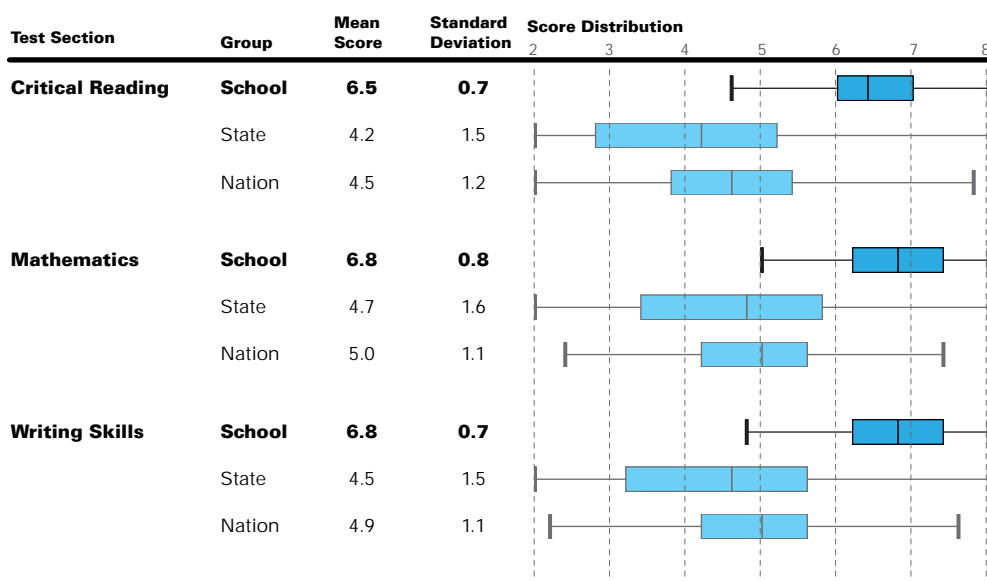
258
8th GRADE STUDENTS

Score Distribution

The "boxplots" to the right show the distribution of test scores for your students, as well as for the state and nation. When interpreting these results, focus on typical scores (means and medians), variability in scores (standard deviations and lengths of boxes), and shapes of distributions (position of boxes relative to the median). Plots that have boxes that are off-center reveal that a greater proportion of students are high-scoring (the box to the right) or low-scoring (box appears to the left).



Note: The minimum and maximum exclude outliers.



When interpreting results throughout this report, please note that State data is based on 1,910 participating students and Nation data is based on 129,082 participating students. Student participation in ReadiStep is concentrated in certain geographical areas and may not be representative of the full student population in your state and the nation.

Critical Reading Skill Analysis

The left column indicates how many questions your students answered correctly. The right column shows your students' performance on each question by skill category. For more information about using Readistep results, visit readistep.collegeboard.org.

Group

x School
G State
F Nation

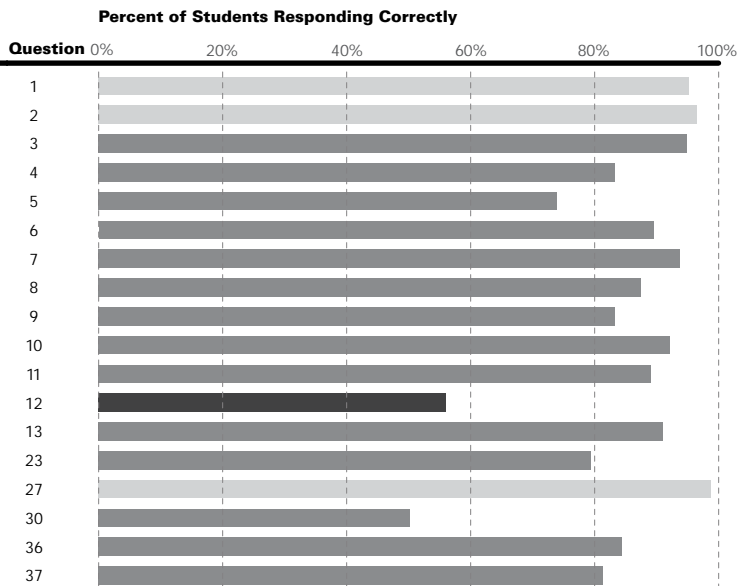
Difficulty

Easy
Medium
Hard

Determining the Meaning of Words

Use vocabulary skills, context, roots, prefixes, and suffixes to determine the meaning of words.

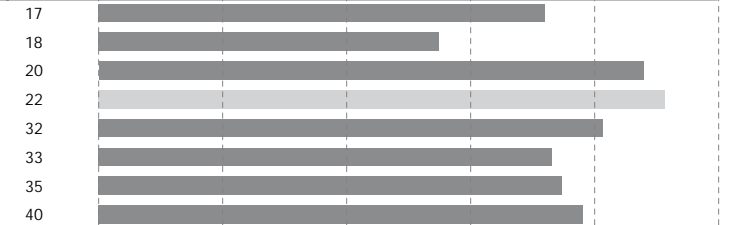
15.2 of 18 questions correct



Author's Craft

Understand how authors use tone, style and writing devices such as metaphor or symbolism.

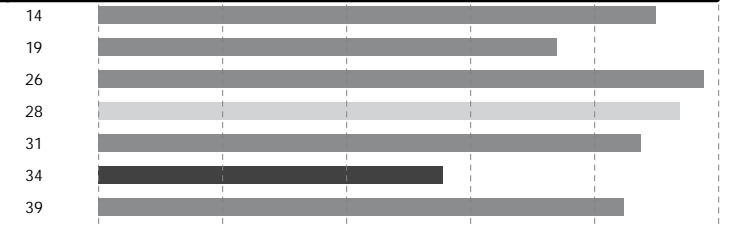
6.1 of 8 questions correct



Reasoning and Inferencing

Understand assumptions, suggestions and implications in reading passages and draw informed conclusions.

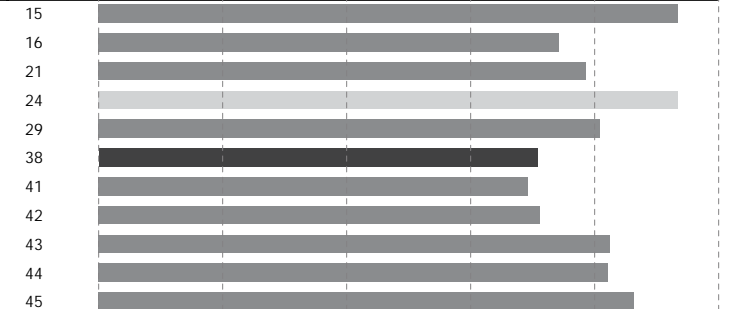
5.8 of 7 questions correct



Organization and Ideas

Understand the organization of a reading passage, and identify the main and supporting ideas.

8.8 of 11 questions correct



Understanding Literary Elements

Understand literary elements such as plot, setting and characterization.

0.7 of 1 questions correct



Critical Reading Question Analysis

This section shows the distribution of correct and incorrect answers for your students, state and nation. Take the next step: Review questions and answer options in the test book, and then develop instructional remediation plans.

Question	Difficulty Group	Answer Data (% and correct answer in bold)					Answer Distribution					
		A	B	C	D	omitted	Correct Answer	20%	40%	60%	80%	
Critical Reading	1 E	School	95	0	2	3	0	A				
		State	72	2	11	15	0					
		Nation	73	2	11	14	0					
	2 E	School	3	96	0	1	0	B				
		State	13	72	7	7	1					
		Nation	12	75	6	7	1					
	3 M	School	1	95	4	1	0	B				
		State	14	51	17	17	1					
		Nation	13	59	13	14	1					
	4 M	School	83	3	9	4	1	A				
		State	48	7	25	18	2					
		Nation	46	6	28	19	1					
	5 M	School	3	74	13	9	1	B				
		State	9	39	32	18	2					
		Nation	10	38	32	17	2					
	6 M	School	89	1	9	0	1	A				
		State	41	29	14	14	2					
		Nation	44	28	15	11	1					
	7 M	School	0	4	94	2	0	C				
		State	14	40	43	3	1					
		Nation	13	39	45	2	0					
	8 M	School	9	1	2	88	0	D				
		State	22	6	20	51	2					
		Nation	26	6	18	49	1					
9 M	School	1	6	9	83	1	D					
	State	4	24	22	48	2						
	Nation	4	24	23	47	1						
10 M	School	2	92	1	5	0	B					
	State	8	54	15	21	2						
	Nation	8	55	15	20	1						
11 M	School	2	4	89	6	0	C					
	State	8	28	36	25	2						
	Nation	9	28	33	28	1						
12 H	School	8	56	18	16	2	B					
	State	22	23	42	9	4						
	Nation	23	19	47	9	2						
13 M	School	8	91	0	1	0	B					
	State	12	71	2	11	4						
	Nation	12	73	2	12	1						
14 M	School	1	8	1	90	0	D					
	State	9	11	16	58	6						
	Nation	10	12	16	60	2						
15 M	School	3	93	0	3	0	B					
	State	10	67	4	12	7						
	Nation	10	70	5	14	2						
16 M	School	12	11	2	74	0	D					
	State	38	9	9	36	8						
	Nation	44	11	8	35	2						
17 M	School	21	2	72	5	1	C					
	State	28	6	41	17	9						
	Nation	29	7	41	20	2						
18 M	School	55	4	28	12	0	A					
	State	40	12	20	18	11						
	Nation	43	15	19	21	3						
19 M	School	8	7	11	74	1	D					
	State	20	17	14	35	13						
	Nation	24	19	17	37	3						
20 M	School	88	5	5	2	0	A					
	State	58	13	10	6	13						
	Nation	65	14	10	7	3						
21 M	School	17	79	3	2	0	B					
	State	22	52	8	4	15						
	Nation	24	59	10	4	3						
22 E	School	5	91	2	0	1	B					
	State	13	54	10	2	22						
	Nation	18	62	12	2	7						
23 M	School	18	1	79	1	1	C					
	State	40	3	32	3	23						
	Nation	51	3	35	3	7						
24 E	School	2	5	0	93	0	D					
	State	4	12	3	57	24						
	Nation	5	16	3	68	8						

Critical Reading Question Analysis

Question	Difficulty	Group	Answer Data (% and correct answer in bold)					Answer Distribution				
			A	B	C	D	omitted	Correct Answer	20%	40%	60%	80%
25	M	School	1	2	70	26	1	C				
		State	5	7	36	25	26					
		Nation	6	10	44	30	9					
26	M	School	98	0	0	2	0	A				
		State	53	6	6	7	28					
		Nation	62	8	9	11	11					
27	E	School	0	99	0	0	0	B				
		State	11	53	5	2	29					
		Nation	14	66	7	2	11					
28	E	School	0	94	0	6	0	B				
		State	3	53	3	11	31					
		Nation	3	66	5	14	12					
29	M	School	9	7	1	81	2	D				
		State	15	14	6	34	32					
		Nation	19	21	8	39	13					
30	M	School	7	6	36	50	0	D				
		State	10	6	28	23	34					
		Nation	12	7	39	27	15					
31	M	School	5	5	88	3	0	C				
		State	14	9	36	4	36					
		Nation	22	14	40	6	18					
32	M	School	7	8	4	81	0	D				
		State	10	16	6	29	39					
		Nation	18	21	8	31	21					
33	M	School	6	6	73	14	1	C				
		State	10	7	27	14	41					
		Nation	15	11	32	20	23					
34	H	School	30	56	11	3	1	B				
		State	26	16	9	7	43					
		Nation	35	18	11	11	25					
35	M	School	18	2	75	4	1	C				
		State	13	5	32	6	43					
		Nation	21	8	37	8	26					
36	M	School	84	3	7	4	2	A				
		State	26	5	11	10	48					
		Nation	32	6	18	12	32					
37	M	School	11	4	81	0	4	C				
		State	9	5	33	4	49					
		Nation	12	9	40	5	34					
38	H	School	71	21	3	1	5	A				
		State	21	13	9	6	51					
		Nation	23	18	14	8	37					
39	M	School	5	3	2	85	5	D				
		State	7	6	3	32	52					
		Nation	10	11	5	36	39					
40	M	School	78	4	2	9	7	A				
		State	29	7	3	8	53					
		Nation	32	11	6	10	41					
41	M	School	2	69	17	6	7	B				
		State	3	24	14	5	54					
		Nation	4	27	20	7	42					
42	M	School	11	10	71	0	8	C				
		State	9	9	24	3	55					
		Nation	12	13	28	5	43					
43	M	School	82	7	2	0	9	A				
		State	29	8	4	2	56					
		Nation	34	12	7	4	44					
44	M	School	82	7	2	2	8	A				
		State	31	9	2	2	56					
		Nation	35	13	4	4	44					
45	M	School	86	1	1	3	9	A				
		State	33	2	4	4	56					
		Nation	39	4	7	6	45					

Critical Reading Comparable Group Analysis

What is a comparable group?

A comparable group is a statistically generated group that allows you to identify questions where your students' performance diverges from what might be expected based on their overall performance. It is a sample of students whose overall performance was similar to the performance of your student population. This group is compiled based on performance only, and does not account for attributes like student demographics, geographic region or school size.

How is this information useful?

Focusing on questions where your students' performance is significantly lower than the comparable group performance can reveal opportunities where you might realistically expect to improve student learning. Similarly, when your students' performance is significantly higher than the comparable group performance, you can identify strengths in your curriculum and instruction, and work to ensure that those strengths are recognized and maintained.

Question	Difficulty	School (% correct)	Comp Group (% correct)	Difference between School and Comparable Group				
				-10%	-5%	0%	+5%	+10%
1	E	95	95			}		
2	E	96	96			}		
3	M	95	92			}		
4	M	83	80			}		
5	M	74	73			}		
6	M	89	90			}		
7	M	94	91			}		
8	M	88	85			}		
9	M	83	77			}		
10	M	92	91			}		
11	M	89	83			}		
12	H	56	50			}		
13	M	91	90			}		
14	M	90	87			}		
15	M	93	92			}		
16	M	74	67			}		
17	M	72	62			}		
18	M	55	58		}			
19	M	74	74		}			
20	M	88	90		}			
21	M	79	83		}			
22	E	91	90		}			
23	M	79	74		}			

Question	Difficulty	School (% correct)	Comp Group (% correct)	Difference between School and Comparable Group				
				-10%	-5%	0%	+5%	+10%
24	E	93	94			}		
25	M	70	68			}		
26	M	98	95			}		
27	E	99	98			}		
28	E	94	96			}		
29	M	81	79			}		
30	M	50	58	}				
31	M	88	85			}		
32	M	81	82			}		
33	M	73	76			}		
34	H	56	56			}		
35	M	75	76			}		
36	M	84	81			}		
37	M	81	87		}			
38	H	71	70			}		
39	M	85	89		}			
40	M	78	80			}		
41	M	69	72		}			
42	M	71	76		}			
43	M	82	89	}				
44	M	82	85			}		
45	M	86	90			}		

Your students performed **significantly worse** on questions that fall in the dark blue column to the left, and **significantly better** on questions that fall in the light blue column to the right.

Mathematics Skill Analysis

The left column indicates how many questions your students answered correctly. The right column shows your students' performance on each question by skill category. For more information about using Readistep results, visit readistep.collegeboard.org.



Number and Operations

Understand types of numbers (integers, fractions, decimals), their properties, and the correct order of operations (multiplication, division, addition).

11.4 of 14 questions correct



Algebra and Functions

Solve problems using algebraic expressions and symbols to represent relationships, patterns, and functions of different types.

6.8 of 8 questions correct



Geometry and Measurement

Solve problems based on understanding the properties of shapes, such as triangles and circles, and the spatial relationships between angles and lines.

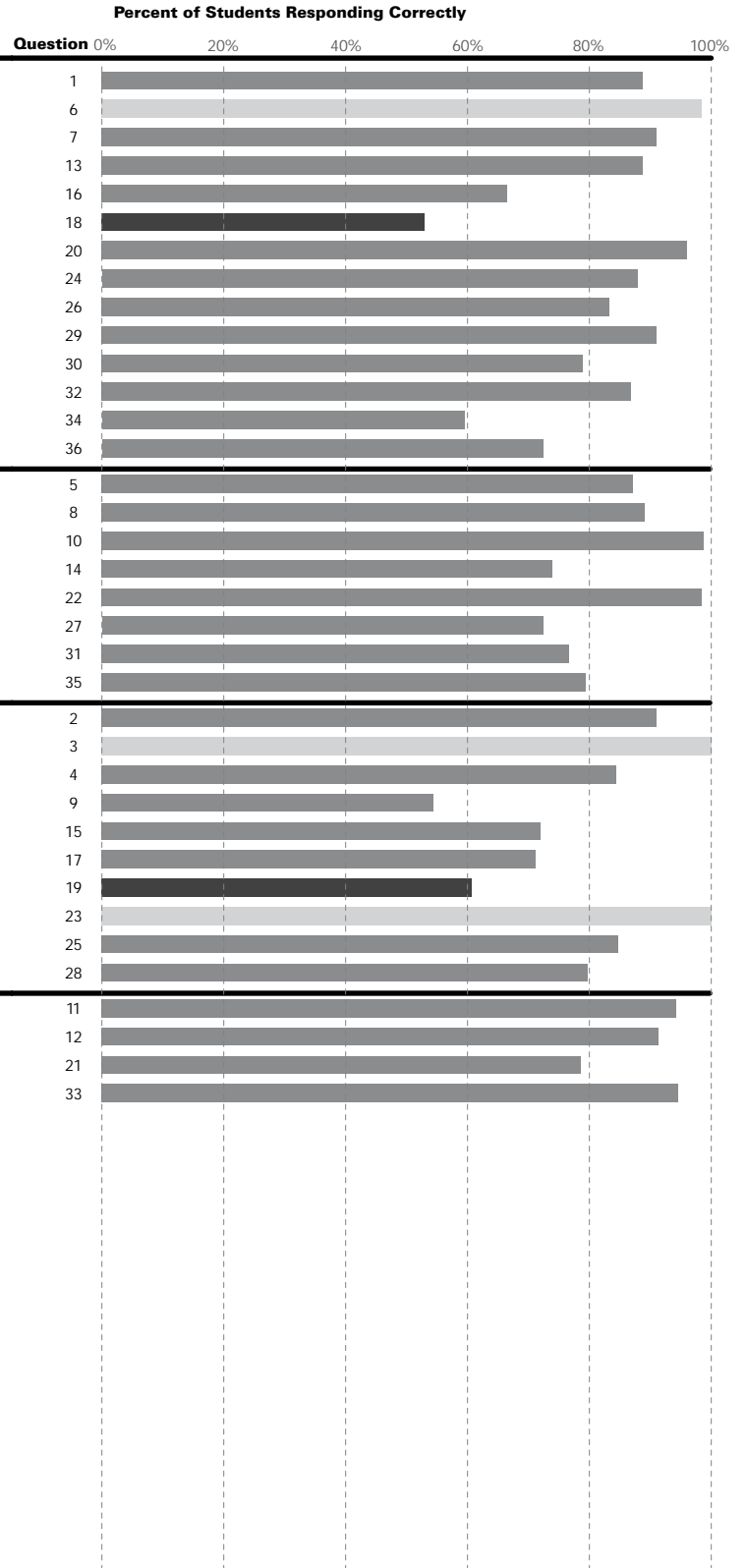
8.0 of 10 questions correct



Data, Statistics, and Probability

Analyze data, understand descriptive statistics, make inferences and determine the likelihood that certain events will occur.

3.6 of 4 questions correct



Mathematics Skill Analysis

The left column indicates how many questions your students answered correctly. The right column shows your students' performance on each question by skill category. For more information about using ReadiStep results, visit readistep.collegeboard.org.

Group	Difficulty
x School	■ Easy
G State	■ Medium
F Nation	■ Hard

Problem Solving

Solve abstract and practical problems, applying and adapting a variety of strategies. Monitor progress and evaluate answers in terms of questions asked.

8.6 of 10 questions correct



Representation

Use and translate among representations including verbal, numerical, symbolic, and graphical to communicate mathematical ideas and solve problems.

9.0 of 11 questions correct



Reasoning

Develop and use mathematical arguments and proofs to explore the truth of conjectures and justify conclusions.

3.3 of 4 questions correct



Connections

Connect ideas from different areas of mathematics (particularly geometry and algebra) to state or solve abstract or applied problems.

7.6 of 9 questions correct



Communication

Express mathematical ideas precisely and communicate them coherently and clearly in the language and notation of mathematics.

1.3 of 2 questions correct



Mathematics Question Analysis

This section shows the distribution of correct and incorrect answers for your students, state and nation. Take the next step: Review questions and answer options in the test book, and then develop instructional remediation plans.

Question	Difficulty	Group	Answer Data (% and correct answer in bold)					Answer Distribution				
			A	B	C	D	omitted	Correct Answer	20%	40%	60%	80%
Mathematics - Calculator	1	M School	5	89	4	2	0	B				
		State	24	53	17	2	3					
		Nation	25	53	17	2	2					
	2	M School	6	3	91	0	0	C				
		State	20	24	52	1	3					
		Nation	20	20	57	2	1					
	3	E School	100	0	0	0	0	A				
		State	79	8	5	3	5					
		Nation	82	8	5	3	1					
	4	M School	2	4	84	10	0	C				
		State	12	9	50	23	6					
		Nation	12	11	51	23	2					
	5	M School	2	87	2	7	2	B				
		State	11	48	12	19	10					
		Nation	13	48	13	21	4					
	6	E School	1	98	0	0	0	B				
		State	6	73	6	5	11					
		Nation	9	78	6	5	3					
7	M School	5	2	2	91	0	D					
	State	11	10	11	53	14						
	Nation	15	17	16	48	4						
8	M School	7	89	2	1	0	B					
	State	17	49	11	5	17						
	Nation	21	49	15	8	7						
9	M School	54	38	2	4	2	A					
	State	30	36	8	5	20						
	Nation	30	46	10	5	9						
10	M School	1	99	0	0	0	B					
	State	6	62	8	4	20						
	Nation	9	66	11	5	9						
11	M School	94	0	4	1	1	A					
	State	47	10	15	4	24						
	Nation	50	12	19	5	12						
12	M School	2	2	3	91	1	D					
	State	7	14	11	41	27						
	Nation	11	17	15	42	16						
13	M School	5	4	89	2	1	C					
	State	10	6	43	10	31						
	Nation	16	10	44	12	19						
14	M School	4	9	11	74	3	D					
	State	10	14	14	29	34						
	Nation	16	19	18	25	23						
15	M School	7	10	72	8	4	C					
	State	18	13	26	6	37						
	Nation	23	18	26	7	26						
16	M School	13	6	67	7	7	C					
	State	12	11	26	9	42						
	Nation	15	16	26	12	32						
17	M School	10	5	9	71	5	D					
	State	13	9	12	28	38						
	Nation	17	11	18	25	30						
18	H School	5	10	53	23	9	C					
	State	6	11	17	24	43						
	Nation	8	16	14	28	34						

Mathematics Question Analysis

Question	Difficulty	Group	Answer Data (% and correct answer in bold)					Answer Distribution				
			A	B	C	D	omitted	Correct Answer	20%	40%	60%	80%
19	H	School	13	61	15	10	2	B	A C D			
		State	32	19	14	9	26		A C D			
		Nation	46	18	17	15	4		A C D			
20	M	School	2	0	1	96	0	D	A			
		State	9	7	6	53	25		A			
		Nation	14	11	9	62	3		A			
21	M	School	3	2	16	79	0	D	A B C			
		State	4	6	33	30	26		A B C			
		Nation	5	10	47	34	4		A B C			
22	M	School	98	1	0	0	0	A				
		State	60	7	5	3	25					
		Nation	74	10	8	5	3					
23	E	School	100	0	0	0	0	A				
		State	66	4	3	2	26					
		Nation	84	6	5	3	3					
24	M	School	2	5	4	88	1	D	A B C			
		State	10	12	9	41	27		A B C			
		Nation	14	19	15	48	4		A B C			
25	M	School	12	2	2	85	0	D	A BC			
		State	17	4	5	48	27		A BC			
		Nation	23	6	6	60	4		A BC			
26	M	School	0	83	2	15	0	B	C D			
		State	2	50	3	19	27		C D			
		Nation	3	61	4	28	4		C D			
27	M	School	11	2	12	72	3	D	A BC			
		State	10	4	19	36	31		A BC			
		Nation	14	7	28	42	8		A BC			
28	M	School	11	80	9	0	0	B	A C			
		State	14	40	13	3	30		A C			
		Nation	22	47	19	5	7		A C			
29	M	School	1	4	91	4	1	C	B D			
		State	11	10	42	6	30		B D			
		Nation	15	15	54	9	7		B D			
30	M	School	10	79	6	3	2	B	A C D			
		State	12	39	12	5	32		A C D			
		Nation	17	46	17	9	11		A C D			
31	M	School	2	10	77	9	2	C	A B D			
		State	4	18	36	9	32		A B D			
		Nation	8	26	39	14	12		A B D			
32	M	School	6	1	87	4	2	C	A D			
		State	7	5	47	7	34		A D			
		Nation	8	8	56	12	15		A D			
33	M	School	2	95	1	1	1	B	A			
		State	11	46	6	5	32		A			
		Nation	17	55	8	6	14		A			
34	M	School	12	60	16	10	3	B	A C D			
		State	14	23	16	12	35		A C D			
		Nation	21	25	20	16	18		A C D			
35	M	School	4	5	79	12	1	C	A B D			
		State	7	8	34	18	34		A B D			
		Nation	9	11	36	27	16		A B D			
36	M	School	18	72	3	5	2	B	A C D			
		State	10	28	7	22	34		A C D			
		Nation	12	26	12	33	17		A C D			

Mathematics Comparable Group Analysis

What is a comparable group?

A comparable group is a statistically generated group that allows you to identify questions where your students' performance diverges from what might be expected based on their overall performance. It is a sample of students whose overall performance was similar to the performance of your student population. This group is compiled based on performance only, and does not account for attributes like student demographics, geographic region or school size.

How is this information useful?

Focusing on questions where your students' performance is significantly lower than the comparable group performance can reveal opportunities where you might realistically expect to improve student learning. Similarly, when your students' performance is significantly higher than the comparable group performance, you can identify strengths in your curriculum and instruction, and work to ensure that those strengths are recognized and maintained.

	Question	Difficulty	School (% correct)	Comp Group (% correct)	Difference between School and Comparable Group				
					-10%	-5%	0%	+5%	+10%
Mathematics - Calculator	1	M	89	90			}		
	2	M	91	90			}		
	3	E	100	100			}		
	4	M	84	83			}		
	5	M	87	86			}		
	6	E	98	98			}		
	7	M	91	92			}		
	8	M	89	89			}		
	9	M	54	51			}		
	10	M	99	97			}		
	11	M	94	91			}		
	12	M	91	90			}		
	13	M	89	87			}		
	14	M	74	71			}		
	15	M	72	75		}			
	16	M	67	62			}		
	17	M	71	70			}		
	18	H	53	47			}		

	Question	Difficulty	School (% correct)	Comp Group (% correct)	Difference between School and Comparable Group				
					-10%	-5%	0%	+5%	+10%
Mathematics - Non Calculator	19	H	61	56			}		
	20	M	96	96			}		
	21	M	79	79			}		
	22	M	98	98			}		
	23	E	100	99			}		
	24	M	88	87			}		
	25	M	85	89		}			
	26	M	83	88		}			
	27	M	72	77		}			
	28	M	80	85		}			
	29	M	91	90			}		
	30	M	79	85		}			
	31	M	77	78		}			
	32	M	87	85		}			
	33	M	95	93		}			
	34	M	60	64		}			
	35	M	79	80		}			
	36	M	72	73		}			

Your students performed **significantly worse** on questions that fall in the dark blue column to the left, and **significantly better** on questions that fall in the light blue column to the right.

Writing Skills Skill Analysis

The left column indicates how many questions your students answered correctly. The right column shows your students' performance on each question by skill category. For more information about using Readistep results, visit readistep.collegeboard.org.

Group

x School
G State
F Nation

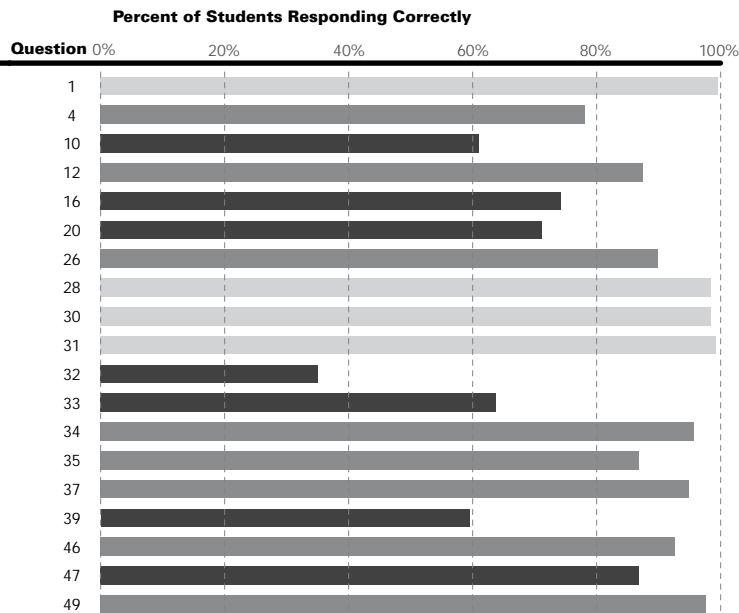
Difficulty

Easy
Medium
Hard

Manage Word Choice and Grammatical Relationships Between Words

Understand relationships between and among words including subject-verb agreement, pronouns, and verb form and tense.

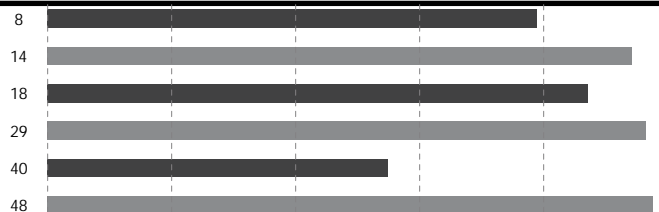
15.7 of 19 questions correct



Manage Grammatical Structures Used to Modify or Compare

Understand correct use of adjectives, adverbs, comparative structures (neither/nor), and phrases used to modify or compare.

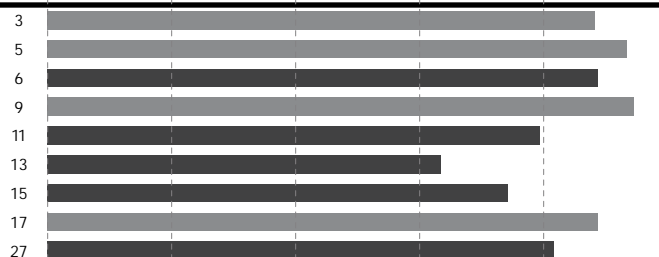
5.1 of 6 questions correct



Manage Phrases and Clauses in a Sentence

Use sentence structures (parallelism, connectives & relative clauses) to indicate relationships between & among sentence elements.

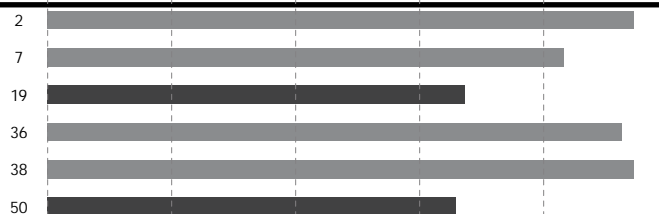
7.5 of 9 questions correct



Recognize Correctly Formed Sentences

Recognize correct sentence structure.

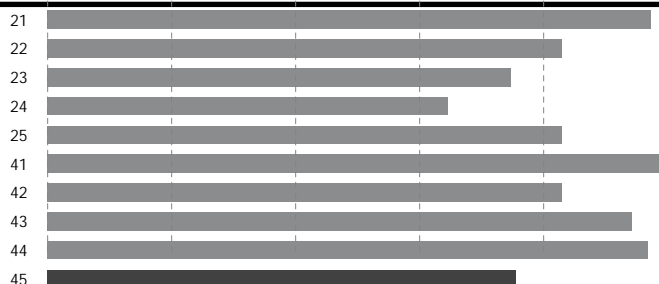
5.0 of 6 questions correct



Manage Order and Relationships of Sentences and Paragraphs

Identify how to order the elements of a sentence or paragraph to improve clarity, meaning, and the progression of ideas.

8.5 of 10 questions correct



Writing Skills Question Analysis

This section shows the distribution of correct and incorrect answers for your students, state and nation. Take the next step: Review questions and answer options in the test book, and then develop instructional remediation plans.

Question	Difficulty Group	Answer Data (% and correct answer in bold)					Answer Distribution				
		A	B	C	D	omitted	Correct Answer	20%	40%	60%	80%
Writing	1 E School	0	100	0	0	0	B				
		2	95	2	1	0					
		3	95	2	1	0					
	2 M School	95	5	0	0	0	A				B
		66	26	3	5	1					
		67	25	2	6	0					
	3 M School	4	0	88	8	0	C				A D
		14	2	72	11	1					
		13	2	71	14	0					
	4 M School	0	0	78	21	0	C				D
		2	2	66	29	1					
		3	2	69	26	0					
	5 M School	2	5	0	93	0	D				B
		13	20	7	59	1					
		14	20	7	58	0					
	6 H School	2	7	2	89	0	D				B C
		10	23	10	56	2					
		9	25	10	55	1					
	7 M School	83	15	0	2	0	A				B
		55	34	5	5	1					
54		37	5	4	0						
8 H School	2	0	18	79	0	D				A C	
	8	8	32	49	2						
	10	10	34	46	1						
9 M School	1	1	95	4	0	C				D	
	3	15	63	16	2						
	3	15	64	17	0						
10 H School	38	61	1	0	0	B				A	
	32	50	7	9	2						
	34	50	7	8	1						
11 H School	4	15	79	2	0	C				A B	
	22	34	36	5	4						
	23	35	35	6	1						
12 M School	2	5	6	88	0	D				B C	
	6	20	9	60	4						
	6	21	11	62	1						
13 H School	31	2	63	2	1	C				A B D	
	35	12	30	19	5						
	36	13	31	19	1						
14 M School	3	0	3	94	0	D				A C	
	7	9	10	68	6						
	9	9	12	69	1						
15 H School	74	20	4	2	0	A				B C D	
	40	37	8	7	8						
	38	44	9	9	1						
16 H School	12	9	74	4	0	C				A B D	
	23	19	38	10	10						
	27	22	38	11	2						
17 M School	4	89	1	7	0	B				A D	
	6	56	4	24	10						
	6	62	5	27	1						
18 H School	0	1	87	12	0	C				D	
	6	36	36	11	12						
	8	37	41	12	2						
19 H School	67	9	14	9	0	A				B C D	
	28	23	19	16	13						
	29	27	25	17	2						
20 H School	5	23	0	71	0	D				A B	
	9	24	10	44	13						
	11	26	13	49	2						

Writing Skills Question Analysis

Question	Difficulty	Group	Answer Data (% and correct answer in bold)					Answer Distribution				
			A	B	C	D	omitted	Correct Answer	20%	40%	60%	80%
21	M	School	97	1	1	1	0	A				
		State	63	4	11	5	17					
		Nation	73	6	12	6	2					
22	M	School	16	83	0	0	0	B				
		State	28	43	4	7	18					
		Nation	35	49	4	8	3					
23	M	School	75	4	18	4	0	A				
		State	46	15	11	9	20					
		Nation	53	20	13	11	3					
24	M	School	1	32	2	65	0	D				
		State	6	35	4	34	21					
		Nation	7	44	6	40	4					
25	M	School	2	83	14	2	0	B				
		State	6	45	21	6	23					
		Nation	8	57	24	7	4					
26	M	School	0	2	90	8	0	C				
		State	2	3	50	20	25					
		Nation	3	5	63	23	5					
27	H	School	0	82	0	17	0	B				
		State	4	33	3	34	26					
		Nation	7	35	5	49	5					
28	E	School	0	1	98	0	0	C				
		State	5	2	65	3	26					
		Nation	6	3	82	4	5					
29	M	School	2	96	0	2	0	B				
		State	9	49	2	14	27					
		Nation	15	58	4	18	6					
30	E	School	98	0	1	0	0	A				
		State	60	2	3	8	28					
		Nation	75	4	4	11	6					
31	E	School	0	0	99	0	0	C				
		State	2	1	66	3	28					
		Nation	3	2	83	5	6					
32	H	School	3	35	2	60	0	B				
		State	12	16	4	39	29					
		Nation	17	16	5	55	7					
33	H	School	1	18	64	17	0	C				
		State	5	20	22	22	30					
		Nation	7	28	26	31	8					
34	M	School	96	0	0	4	0	A				
		State	45	3	3	18	31					
		Nation	53	4	5	29	8					
35	M	School	0	87	0	12	0	B				
		State	2	47	2	17	31					
		Nation	2	58	4	26	9					
36	M	School	2	5	0	93	0	D				
		State	6	8	3	51	32					
		Nation	9	11	4	67	9					
37	M	School	1	95	1	3	0	B				
		State	3	41	4	20	33					
		Nation	6	48	7	29	10					
38	M	School	2	2	2	95	0	D				
		State	6	4	4	52	33					
		Nation	9	8	7	66	11					
39	H	School	0	60	1	40	0	B				
		State	4	20	4	39	33					
		Nation	6	22	6	55	11					
40	H	School	1	55	3	41	0	B				
		State	5	21	6	34	34					
		Nation	9	26	10	44	11					

Writing Skills Question Analysis

Question	Difficulty	Group	Answer Data (% and correct answer in bold)					Answer Distribution					
			A	B	C	D	omitted	Correct Answer	20%	40%	60%	80%	
Writing	41	M	School	0	0	1	99	0	D	[Bar chart showing 99% correct answer D]			
			State	4	3	3	53	37		[Bar chart showing 53% correct answer D]			
			Nation	6	4	6	70	14		[Bar chart showing 70% correct answer D]			
	42	M	School	7	83	7	3	0	B	[Bar chart showing 83% correct answer B]			
			State	9	42	7	5	37		[Bar chart showing 42% correct answer B]			
			Nation	13	52	12	8	15		[Bar chart showing 52% correct answer B]			
	43	M	School	2	4	94	0	0	C	[Bar chart showing 94% correct answer C]			
			State	9	13	39	2	38		[Bar chart showing 39% correct answer C]			
			Nation	15	20	46	3	16		[Bar chart showing 46% correct answer C]			
	44	M	School	1	97	1	1	0	B	[Bar chart showing 97% correct answer B]			
			State	3	48	4	6	39		[Bar chart showing 48% correct answer B]			
			Nation	7	59	9	8	17		[Bar chart showing 59% correct answer B]			
	45	H	School	1	22	2	75	0	D	[Bar chart showing 75% correct answer D]			
			State	10	18	4	29	40		[Bar chart showing 29% correct answer D]			
			Nation	15	24	6	36	18		[Bar chart showing 36% correct answer D]			
46	M	School	2	6	93	0	0	C	[Bar chart showing 93% correct answer C]				
		State	3	7	48	2	41		[Bar chart showing 48% correct answer C]				
		Nation	5	10	63	3	19		[Bar chart showing 63% correct answer C]				
47	H	School	11	87	3	0	0	B	[Bar chart showing 87% correct answer B]				
		State	17	29	12	2	41		[Bar chart showing 29% correct answer B]				
		Nation	25	33	19	3	20		[Bar chart showing 33% correct answer B]				
48	M	School	0	98	1	1	0	B	[Bar chart showing 98% correct answer B]				
		State	5	48	4	2	41		[Bar chart showing 48% correct answer B]				
		Nation	7	62	7	4	20		[Bar chart showing 62% correct answer B]				
49	M	School	0	0	2	98	0	D	[Bar chart showing 98% correct answer D]				
		State	2	4	6	47	42		[Bar chart showing 47% correct answer D]				
		Nation	3	7	10	58	21		[Bar chart showing 58% correct answer D]				
50	H	School	21	66	2	11	0	B	[Bar chart showing 66% correct answer B]				
		State	16	24	3	15	42		[Bar chart showing 24% correct answer B]				
		Nation	22	30	5	22	21		[Bar chart showing 30% correct answer B]				

Writing Skills Comparable Group Analysis

What is a comparable group?

A comparable group is a statistically generated group that allows you to identify questions where your students' performance diverges from what might be expected based on their overall performance. It is a sample of students whose overall performance was similar to the performance of your student population. This group is compiled based on performance only, and does not account for attributes like student demographics, geographic region or school size.

How is this information useful?

Focusing on questions where your students' performance is significantly lower than the comparable group performance can reveal opportunities where you might realistically expect to improve student learning. Similarly, when your students' performance is significantly higher than the comparable group performance, you can identify strengths in your curriculum and instruction, and work to ensure that those strengths are recognized and maintained.

Question	Difficulty	School (% correct)	Comp Group (% correct)	Difference between School and Comparable Group				
				-10%	-5%	0%	+5%	+10%
1	E	100	99					
2	M	95	95					
3	M	88	87					
4	M	78	86					
5	M	93	93					
6	H	89	86					
7	M	83	81					
8	H	79	73					
9	M	95	94					
10	H	61	68					
11	H	79	74					
12	M	88	90					
13	H	63	72					
14	M	94	94					
15	H	74	73					
16	H	74	77					
17	M	89	89					
18	H	87	88					
19	H	67	64					
20	H	71	77					
21	M	97	94					
22	M	83	80					
23	M	75	82					
24	M	65	66					
25	M	83	80					

Question	Difficulty	School (% correct)	Comp Group (% correct)	Difference between School and Comparable Group				
				-10%	-5%	0%	+5%	+10%
26	M	90	94					
27	H	82	74					
28	E	98	99					
29	M	96	96					
30	E	98	98					
31	E	99	99					
32	H	35	34					
33	H	64	56					
34	M	96	95					
35	M	87	86					
36	M	93	94					
37	M	95	93					
38	M	95	96					
39	H	60	58					
40	H	55	57					
41	M	99	97					
42	M	83	84					
43	M	94	92					
44	M	97	96					
45	H	75	81					
46	M	93	93					
47	H	87	84					
48	M	98	97					
49	M	98	96					
50	H	66	67					

Your students performed **significantly worse** on questions that fall in the dark blue column to the left, and **significantly better** on questions that fall in the light blue column to the right.